

Edition 5

£5.99

# MASTERCLASS magazine

## Real Kitchen Renovations

Shining a Spotlight on the  
Latest Kitchen Renovation  
Ideas and Inspiration

## What's New?

The Latest Kitchen  
Design Trends and  
How to Enhance  
Your Design

MASTERCLASS®  
— KITCHENS —

PLUS...

Trending Kitchens  
That Stand the Test Of Time

Full Coordination  
Inside and Out

Nancy Meyers Trend  
A Decorating Guide

Nourishing Dishes  
For Real Life



HARDWICK BISCUIT WITH OLIVE AND TUSCAN WALNUT CABINTRY

# CONTENTS

# CONTENTS



H-LINE AMALFI ROSSO AND LIGNA TUSCAN WALNUT

## In this issue...

- 06 What's New**  
A first look at the latest design trends, finishes, and features that are now part of the collection.
- 12 Trending Kitchens**  
Stylish kitchen ideas that stay effortlessly appealing over time.
- 16 Nancy Meyers**  
A kitchen decorating guide.
- 20 Full Coordination**  
Discover how true coordination comes from every detail, not just the colour of the frontages.
- 28 Scandi Kitchens**  
A step-by-step design guide.
- 34 Perfect Pairings**  
Choosing your kitchen cabinet handles to enhance your style.
- 38 Gothic Grandeur**  
We look inside Kingswell Kitchens' latest kitchen renovation.
- 44 Retailer Spotlight**  
A look at the creativity and passion behind our work with Owen Williams Kitchens.
- 48 The Art of Neutral**  
Where enduring style meets inviting warmth.
- 54 Earthy Hues and Greenery**  
A kitchen designed for modern family living by Euphoria Kitchens
- 60 Timeless Kitchens**  
Shaker kitchen luxury in your home
- 67 Food and Drink**  
Recipes to kickstart your weekend
- 70 Glamorous Home Bar Ideas**  
Our favourite ways to show off your prized cocktail drinks selection
- 74 Beautiful Real Kitchens**  
A look through some of our latest real kitchens from our partners
- 78 Buying Your Dream Kitchen**  
Our most asked questions about purchasing your kitchen
- 79 Find Your Local Retailer**  
Your local Platinum Partner studio brings the best of Masterclass to life.
- 80 Pets in Kitchens**  
Photos that will make you smile!

---

Welcome to  
Edition 5 of  
*Masterclass Magazine*.  
Inside this issue you  
will see real homes,  
design tips, tricks and  
delicious recipes.

---



## Say Hello to *Blonde Oak and Espresso*

We've blended new finishes with endless coordination possibilities. Blonde Oak and Espresso provide the perfect indulgence for your next Masterclass design.



MASTERCLASS<sup>®</sup>  
— KITCHENS —



Est. 1975. Made in the U.K.



ASHBOURNE BEACH HOUSE



# Masterclass Kitchens *inspiration*



**Pin it**

Join us online for beautiful kitchen inspiration and fabulous ideas.

[masterclasskitchens.co.uk](http://masterclasskitchens.co.uk)



Our online inspiration blog is jam-packed full of kitchen articles that have been featured in kitchen and home interior magazines. Visit [masterclasskitchens.co.uk/inspiration](http://masterclasskitchens.co.uk/inspiration)



Follow @masterclasskitchens on Instagram for stunning kitchen interiors. Plus take a look inside some of our favourite 'Real Kitchens.'

## #MASTERCLASSMOMENTS

Tag us @masterclasskitchens to show us your new Masterclass kitchen and living space. We adore seeing your finished rooms.

Follow us on



Instagram @masterclasskitchens



Facebook /masterclasskitchens



TikTok @masterclasskitchens

# Hello & Welcome

Welcome to a brand-new issue of **Masterclass Magazine**, your ultimate companion for inspired living and truly beautiful kitchen design. This edition is brimming with fresh ideas, expert insight and real-home creativity to help you shape a space that feels both personal and extraordinary.

Step straight into the latest design movements with **What's New** and **Trending Kitchens**, where we explore the innovations and timeless styles reshaping today's homes. For those who adore characterful interiors, our **Nancy Meyers Guide** brings Hollywood charm to everyday spaces, while **Full Coordination** uncovers the magic of creating a perfectly unified kitchen palette.

If you're dreaming of calm, effortless elegance, our **Scandi Kitchens** guide will walk you through the look step-by-step. When it comes to detail, **Perfect Pairings** shows you how the right handles can transform your cabinetry. For something truly dramatic, **Gothic Grandeur** opens the doors to a breathtaking real-home renovation you won't want to miss. We're thrilled to spotlight some of our talented partners too, each bringing passion, craftsmanship and real-world inspiration to every page.

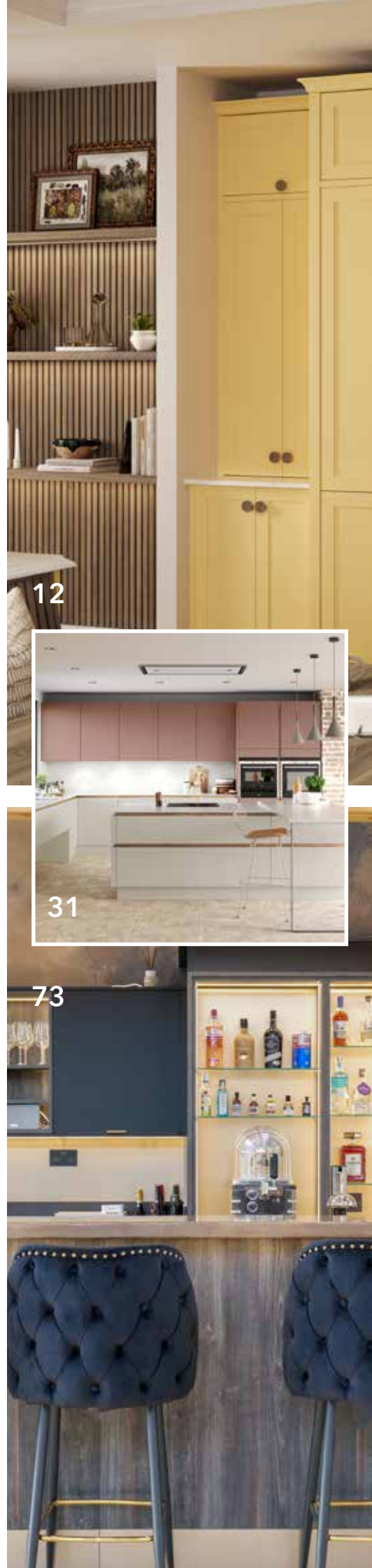
Great kitchens deserve great moments, our **Food & Drink** section serves up delicious weekend recipes, while our **Glamorous Home Bars** showcase the most stylish ways to elevate your evening ritual. Don't miss our gallery of **Beautiful Real Kitchens**, expert advice on **Buying Your Dream Kitchen**, and a joyful look at **Pets in Kitchens** – guaranteed to make you smile.

Whether you're gathering ideas, starting your design journey or simply here for inspiration, this issue is crafted to help you create a kitchen that feels truly like home.



*Cassie*

Cassie Jones  
Brand Manager



# What's New?



## CLEARLY IMPRESSIVE

Smoked glass door larders are now available with elegant glass shelves and subtle internal lighting. Perfect for creating a glamorous feature in your kitchen, they work beautifully as a neat bar area or as a showcase for treasured possessions, keeping everything stylishly stored and on display.

THE HATHAWAY GLASS LARDERS IN TUSCAN WALNUT



## SEAMLESS STYLE

Extend the look with matching glass door cabinets, designed for both base and wall units. They carry the stunning display feature through the kitchen, creating a cohesive, light-filled design that showcases your favourite pieces with elegance and ease.

## PRETTY IN PINK

Perfect coordination awaits as you explore the pages of this magazine. Whatever your style preferences, you'll discover inspiring ways to mix, match and create your dream scheme with our Blonde Oak, Portland Oak, Tuscan Walnut and Espresso finishes.



## TRENDING

### *Handled Beautifully*

The timeless appeal of wooden handles is making a stylish return, bringing warmth and sophistication to modern and traditional kitchen design.



TUSCAN WALNUT HANDLES

This trending detail creates perfect harmony, whether chosen to blend seamlessly with cabinets and drawers or to provide a striking contrast.



PORTLAND OAK HANDLES

By echoing tones or introducing subtle variation, wooden handles elevate the space with natural character and a beautifully considered finish.



ESPRESSO HANDLES



BLONDE OAK HANDLES

HATFIELD WILLOW WITH TUSCAN WALNUT CROSS WINE RACK



# WINE NOT?

# SHOW IT OFF



OSLO ONYX WITH PORTLAND OAK CROSS WINE RACK



## BUILT INTO EVERY GREAT KITCHEN

For nearly five decades, we have been wholeheartedly committed to crafting the Caple product range, empowering you to maximise the potential of your kitchen. By combining intelligent technology with intuitive features, sophisticated designs and a selection of exquisite finishes, our products are meticulously crafted to transform your kitchen into an efficient space tailored to suit your needs.



Scan the QR code to shop the collection  
Products: JOY3IN1/BS and MODE740/BS

Discover more at  
[caple.co.uk](https://www.caple.co.uk)



# SLIDE RIGHT IN



LIGNA BLONDE OAK SLIDING CABINET WITH MATCHING SHELVING AND HANDLES AND AMALFI WINDSOR BLUE



LIGNA TUSCAN WALNUT SLIDING DOOR CABINETS



MADOC HENLEY OAK SLIDING DOOR CABINETS



LIGNA TUSCAN WALNUT SLIDING DOOR CABINETS

## SLIDING DOOR CABINETS

Our sliding door cabinets are a great alternative to standard doors. Their side-to-side mechanism stops doors protruding into walking spaces and their soft-close feature makes them a pleasure to use. Integrated lighting comes as standard, enhancing everyday usability while creating a striking visual finish.



H-LINE OXWICH WILLOW WITH CROSS WINE RACK IN PORTLAND OAK



H-LINE BI-FOLD LARDER IN TUSCAN WALNUT

*“A kitchen should be as refined as it is functional, where clean lines meet clever design, and timeless features bring warmth to even the most contemporary space.”*



H-LINE CONNERY COCKTAIL CABINET IN PORTLAND OAK

Handleless kitchens are the epitome of modern minimalism, but that doesn't mean compromising on character. With a fresh twist, our handleless designs now incorporate Signature storage features traditionally reserved for classic kitchens. A kitchen should be as refined as it is functional, where clean lines meet clever design, and timeless features bring warmth to even the most contemporary space.

From elegant cross wine racks to the spacious bi-fold larders and sophisticated cocktail cabinets, they bring warmth and personality to a sleek, streamlined space.

All available in Blonde Oak, Portland Oak, Tuscan Walnut and Espresso finishes.



H-LINE AMALFI SCOTS GREY WITH WINDSOR BLUE AND PORTLAND OAK HANDLE RAIL

In a space defined by clean lines and understated elegance, warming wood finishes introduce a layer of comfort and character. Handleless kitchen furniture, known for its sleek and seamless aesthetic, becomes more inviting when paired with the organic beauty of timber finishes.



H-LINE LANSBURY IN PORTLAND OAK



H-LINE LIGNA ESPRESSO AND AMALFI ONYX WITH TUSCAN WALNUT HANDLE RAIL



ESPRESSO INTERNAL DRAWER LARDER WITH INTEGRATED LIGHTING, AS STANDARD



# Trending Kitchens that Stand the Test of Time

Discover kitchen designs that blend contemporary style with enduring appeal. From warm wood finishes to clever storage solutions like our cross wine racks, every detail is crafted to remain effortlessly elegant for years to come.



BLOOMSBURY BUTTER YELLOW WITH BUTLER'S PANTRY IN TUSCAN WALNUT



BLOOMSBURY PUMPKIN SPICE WITH  
BAR DRESSER IN BLONDE OAK

We've added freshly baked features to our collection, including a butler's pantry (left) and extra deep Bar Dresser (above), showcasing just a hint of our tasty enhancements.



BLOOMSBURY BUTTER YELLOW



WINE DRAWERS IN TUSCAN WALNUT

Whether you're renovating or refreshing, choose features that never go out of fashion, because true style is timeless. Showcase your wine collection with our stylish wine drawers, thoughtfully designed to make a feature of a base cabinet. Whether you're displaying a few favourites or curating a full selection, these drawers combine timeless design with practical functionality. Available in four warming finishes: Portland Oak, Tuscan Walnut, Blonde Oak and Espresso.



BLOOMSBURY PUMPKIN SPICE WITH BLONDE OAK WORKTOPS, ACOUSTIC PANELS AND HANDLES



BLONDE OAK ACOUSTIC WALL PANELS AND HANDLES

*“Whether you’re renovating or refreshing, choose features that never go out of fashion, because true style is timeless.”*



CLIFTON ROSSO WITH INTERNAL DRAWER LARDER IN ESPRESSO AND INTERNAL LIGHTING AS STANDARD



CLIFTON ROSSO WITH TORUS PLINTH



CLIFTON ROSSO WITH MAGNASPACE IN ESPRESSO



CLIFTON ROSSO WITH ESPRESSO SHELVEING

Make a statement with our Rosso painted kitchen, a rich, confident red that brings warmth and sophistication to the heart of your home. Paired with classic design elements and grounded by the deep tones of Espresso cabinetry, this kitchen strikes the perfect balance between tradition and modern flair.



HAWKSMOOR NEW FOREST AND HIGHLAND STONE

In a recent *Architectural Digest* article, Hollywood director Nancy Meyers showcased her L.A. home and the interior design community gasped, including the expert designers here at Masterclass Kitchens. Just as an aroma conjures a bygone memory, her kitchen transported us to the joy of early 2000s rom-coms. A simpler, comfier time.

Of course, we should have expected nothing less. Meyers is a home decorating master. Each set she designs is art. A Nancy Meyers home tells a story: marriage; heartbreak; growth. And each prop layers evidence of a life well lived. Like Japanese kintsugi, she turns life's mistakes into seams of gold.



HAWKSMOOR  
NEW FOREST AND  
HIGHLAND STONE



HARDWICK CANDY GLOSS



Millions still covet Nancy Meyers bedrooms, make Nancy Meyers living room mood boards and share Nancy Meyers décor online. Our love affair with her sets is even more intense than her stories. But who is Nancy Meyers and what makes a Nancy Meyers interior? In today's article, we cover everything you'll need to replicate her homely interior design in your kitchen.

PADSTOW FARRINGDON GREY



ASHBOURNE COASTAL MIST

### GREEN BETTER DAYS

Infuse your kitchen with the soothing embrace of nature with New Forest, shown in Bloomsbury. A palette inspired by luscious landscapes, these cabinets effortlessly create a haven of tranquillity and style.



BLOOMSBURY NEW FOREST AND HIGHLAND STONE

### NEW BEGINNINGS

A pale kitchen island, butler's sink and kitchen island barstools all play a part in the kitchen design trend, feeding the "coastal grandma" theme.



ASHBOURNE FARRINGDON GREY




# Why NEFF

The kitchen is the heart of the home, and NEFF appliances are the perfect choice for those seeking freedom and creativity in their culinary space.

## THE ICONIC SLIDE & HIDE®

Freedom in the kitchen is what makes us tick, so that's why we invented the Slide & Hide® oven door. Immerse yourself in the joy of cooking thanks to the innovative design that hides the oven door, getting you closer to your cooking than ever before.

 Trustpilot



NEFF Home UK rated Excellent on Trustpilot.  
Trustscore 4.7 / April 2025



Scan the QR code to learn more.



## *NEFF Venting Hobs*

# ELEVATE KITCHEN STYLE & COOKING!

### THE 2-IN-1 HOB AND HOOD:

With freedom from a conventional wall or island hood, our integrated cooktop ventilation allows you to reclaim your space in the kitchen. The NEFF Venting Hob is set to create the stylish and sociable kitchen you've always dreamt of.

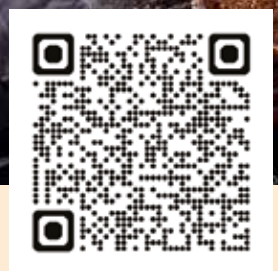
Our Venting Hobs offer maximum flexibility in installation options - Unducted, Partly Ducted, Fully Ducted & Ducted out. Perfect for any kitchen layout, whether it be installed on a kitchen island or against the wall.

### PERFECT RESULTS FOR EVERY DISH WITH FRYING SENSOR

The sensor automatically adjusts the heat to the pan to maintain an even temperature. This control allows you to cook all dishes to perfection as it maintains a consistent heat preventing overcooking or burning.



Scan the QR code to learn  
more about Frying Sensor!



# Full Coordination, *Inside and Out*

A beautifully coordinated kitchen doesn't start with the door frontages. It starts with the colours and textures you'll live with everyday. When your internal palette sings (think: the cabinet interiors you open, the drawers you touch, the storage features you use), the exterior becomes a natural extension of that harmony.



BLOOMSBURY PUMPKIN SPICE WITH BLONDE OAK HANDLES, WORKTOPS, ACOUSTIC WALL PANELS



Light-reflective yet beautifully warm, **Blonde Oak's** soft wood effect brings an effortless sense of openness to the home, creating a canvas that encourages creativity without demanding attention. Its gentle grain structure introduces texture in a way that feels refined, natural and calming, proving that understated design can be just as powerful as bolder statements.



BLOOMSBURY PUMPKIN SPICE WITH BLONDE OAK BAR DRESSER AND MATCHING HANDLES



OSLO ONYX WITH BLONDE OAK CABINETRY, HANDLES, ACOUSTIC WALL PANELS AND SHELVING



## Blonde Oak

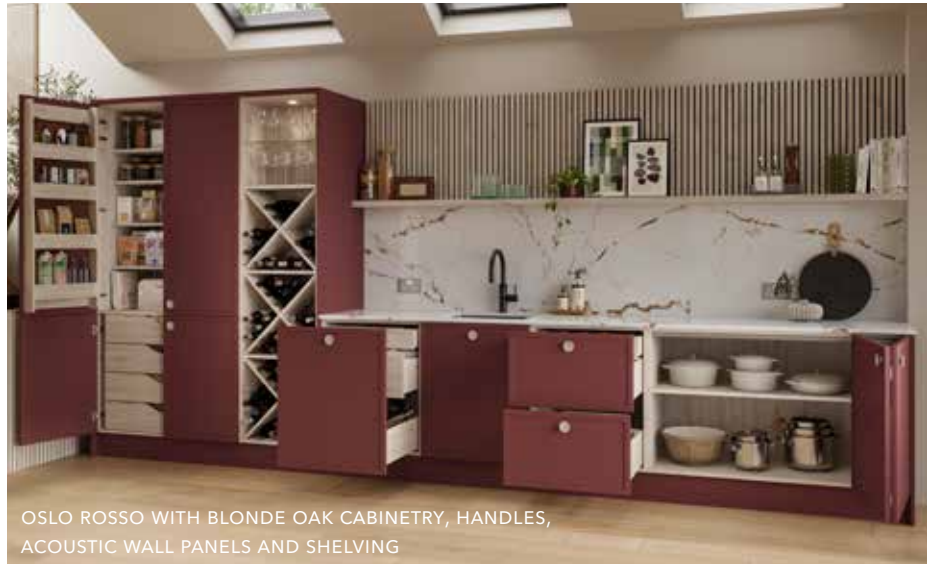
The neutral charm of **Blonde Oak** allows a kitchen design to become a fresh and inspiring backdrop for everyday living.



OSLO CANDY FLOSS WITH SPACETOWER IN BLONDE OAK



OSLO CANDY FLOSS WITH BLONDE OAK DRAWERS



OSLO ROSSO WITH BLONDE OAK CABINERY, HANDLES, ACOUSTIC WALL PANELS AND SHELVING



AMALFI WINDSOR BLUE WITH BLONDE OAK CABINERY, HANDLES AND SHELVING



HAWKSMOOR BEACH HOUSE WITH SEA SALT AND PORTLAND OAK CABINETRY



## Portland Oak

**Portland Oak** offers a refined evolution of natural wood design, balancing contemporary style with organic warmth.



H-LINE AMALFI SCOTS GREY WITH WINDSOR BLUE AND PORTLAND OAK HANDLE RAILS



OSLO ROSSO WITH PORTLAND OAK CABINETRY, HANDLES, ACOUSTIC WALL PANELS AND SHELVING

As kitchen design moves towards a more cohesive approach, Portland Oak excels in fully coordinated schemes that unify the kitchen's interior and exterior identity.

Slightly deeper and more muted than lighter oak tones, it carries a soothing neutrality that complements modern interiors with ease. Its elegant grain provides visual interest without overwhelming the space, making it ideal for homeowners seeking a timeless finish that adapts effortlessly to personal style and décor choices.



OSLO PUMPKIN SPICE WITH PORTLAND OAK CABINETRY, HANDLES, ACOUSTIC WALL PANELS AND SHELVING



OSLO ONYX WITH HIGHLAND STONE, PORTLAND OAK CROSS WINE RACK, MATCHING HANDLES, ACOUSTIC WALL PANELS AND SHELVEING



SUTTON HIGHLAND STONE WITH PORTLAND OAK CABINETRY



HARDWICK HIGHLAND STONE WITH NEW FOREST AND PORTLAND OAK CABINETRY



PORTLAND OAK CRATE DRAWERS



H-LINE OXWICH WILLOW WITH CROSS WINE RACK IN PORTLAND OAK



OSLO BUTTER YELLOW WITH PORTLAND OAK CABINETRY, HANDLES, ACOUSTIC WALL PANELS AND SHELVEING



## Tuscan Walnut

**Tuscan Walnut** brings rich depth and natural confidence to kitchen design, drawing inspiration from heritage interiors and earthy Mediterranean palettes.



HARDWICK ONYX WITH TUSCAN WALNUT CABINETRY AND REEDED GLASS CABINETS



OSLO OXFORD BLUE WITH TUSCAN WALNUT CROSS WINE RACK, DRAWERS, CABINETRY, HANDLES AND ACOUSTIC WALL PANELS



AMALFI DUSTY PINK WITH TUSCAN WALNUT CRATE DRAWERS AND HANDLES



HARDWICK LAVA WITH THE CONNERY IN TUSCAN WALNUT



HARDWICK BISCUIT AND OLIVE WITH TUSCAN WALNUT CABINTRY

Designers and homeowners are increasingly embracing full-finish coordination to heighten the impact of premium wood effects like **Tuscan Walnut**. Extending this finish beyond door fronts into internal storage, features and exposed design details creates a fully considered sense of luxury. Its darker, refined wood effect introduces warmth with sophistication, grounding the space while inviting contrast through lighting, hardware and statement surfaces. The finish feels familiar and comforting, yet elevated, offering character without conformity.



H-LINE LIGNA TUSCAN WALNUT WITH MATCHING HANDLE RAILS AND CABINTRY AND AMALFI ROSSO



BLOOMSBURY BUTTER YELLOW WITH TUSCAN WALNUT HANDLES, ACOUSTIC WALL PANELS, SHELVING AND CABINTRY



BUTLER'S PANTRY IN TUSCAN WALNUT

H-LINE LIGNA ESPRESSO AND AMALFI ONYX WITH TUSCAN WALNUT HANDLE RAIL



Espresso

**Espresso** is a beautifully bold wood-effect finish that embodies sophistication and warmth.



ESPRESSO DRAWERS



THE HATHAWAY SHELVED LARDER WITH SCALLOPED DRAWERS IN ESPRESSO

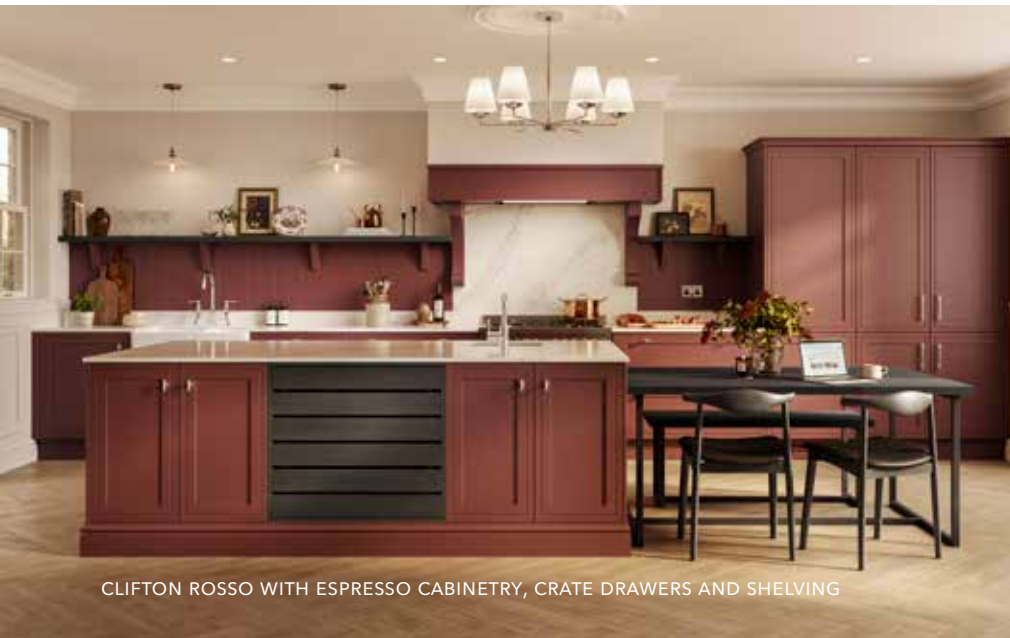


OSLO SCOTS GREY WITH ESPRESSO CROSS WINE RACK, DRAWERS, CABINETRY, HANDLES AND ACOUSTIC WALL PANELS



OSLO WILLOW WITH ESPRESSO CROSS WINE RACK, DRAWERS, CABINETRY, HANDLES AND ACOUSTIC WALL PANELS

Deep-toned and luxuriously grained, **Espresso** complements neutrals and bold colours alike. This finish carries presence without excess, creating a premium, modern feel that remains rooted in timeless design appeal. Offering more than style, Espresso creates longevity, intention and a unified aesthetic that feels luxurious today and remains inspiring in the years ahead.



CLIFTON ROSSO WITH ESPRESSO CABINETRY, CRATE DRAWERS AND SHELVING



ESPRESSO INTERNAL DRAWER LARDER



OSLO PUMPKIN SPICE WITH ESPRESSO CROSS WINE RACK, DRAWERS, CABINETRY, HANDLES AND ACOUSTIC WALL PANELS



OSLO CANDY FLOSS WITH ESPRESSO CROSS WINE RACK, DRAWERS, CABINETRY, HANDLES AND ACOUSTIC WALL PANELS

A modern kitchen with white cabinetry, a large window overlooking a garden, and a wooden beam ceiling. The kitchen features a white countertop, a sink, and a stove. A large window with a wooden frame provides a view of a green lawn and garden. The ceiling has exposed wooden beams. The overall aesthetic is clean and minimalist.

# Scandi Kitchens

## *A Step-By-Step Design Guide*

Dreamt up in Denmark, *hygge* (pronounced "hoo-ga") - a quality of cosiness - has influenced Nordic interior design, loved by many, for 200 years. In the 1950s, however, a Brooklyn Museum promoted Nordic designers' Scandi furniture, and Scandi kitchens became a truly global phenomenon.



H-LINE SUTTON HIGHLAND STONE WITH MADOC HENLEY OAK



H-LINE SUTTON HIGHLAND STONE WITH MADOC HENLEY OAK SLIDING DOOR CABINETS

It's commonly misconceived that Scandi kitchens' minimalistic features and pastel colours make them cold. In reality, though, they're warm. Indeed, the minimalism is purely practical and, if done right, Scandi kitchen décor should express hygge, creating coziness that can hold off

a harsh Nordic winter. Take these Scandi home interior designs, for example. Showcasing warm tones, natural woods and deeper elements that perfectly capture the mid-century modern kitchen aesthetic, they're warm and welcoming in spite of their ultra-practical, modern cabinetry.



H-LINE AMALFI ONYX WITH SUNSET AND ONYX HANDLE RAILS



FLOATING TALL CABINETS IN H-LINE AMALFI SUNSET WITH ACOUSTIC WALL PANELS IN ONYX



CORNER CABINET IN GRAPHITE WITH FLYOVER SHELVING

H-LINE OXWICH WILLOW WITH LIGNA PORTLAND OAK WALL CABINETS AND MATCHING PORTLAND OAK HANDLE RAILS

The fundamental components of a Scandi-style interior are; lots of natural light, a functional layout, neutral colour palettes, minimalist aesthetics, high-quality craftsmanship, lastly, and importantly, keep walkways clear. Doing so adds to the minimalist vibe that characterises most Scandi kitchens.



H-LINE AMALFI ROSSO WITH TUSCAN WALNUT DRAWERS



KITCHEN PANTRY WITH SMOKED GLASS DOORS



H-LINE LIGNA TUSCAN WALNUT WITH TUSCAN WALNUT BI-FOLD LARDER



### WARMING WOOD

A modern handleless kitchen can often start looking clinical, especially if you opt for a bright, neutral colour scheme. Why not include a wood-textured handle rail and cabinetry to add warmth and style flair? This subtle accent will leave your kitchen looking modern and timeless.

H LINE SUTTON AUTUMN BLUSH AND HIGHLAND STONE WITH PORTLAND OAK HANDLE RAILS



THE HATHAWAY SHELVED LARDER WITH SCALLOPED DRAWERS IN ESPRESSO



ESPRESSO DRAWERS



H-LINE AMALFI ONYX WITH LIGNA ESPRESSO DOORS, CABINERY AND TUSCAN WALNUT ACOUSTIC WALL PANELS

# BLANCO

# THE KITCHEN WATER PLACE SPECIALISTS

We spend about 60% of our time in the kitchen at the sink area. So it's important to ensure that things happen efficiently here. This is where **BLANCO, Germany's No.1** at the kitchen water place, can help.

We are among the world's leading manufacturers of kitchen taps, sinks and integrated waste and organisation systems, which make up the **BLANCO UNIT**. Our innovation at the kitchen water place helps make life easier every day.



# EVEN MORE CHOICE WITH BLANCO'S NEW ICONA-L AND ICONA-C TAPS

State-of-the-art CHOICE provides everything you need for delicious drinking water, food preparation and cleaning.

Whether you want filtered chilled, 100° boiling and sparkling water, or hot and cold cleaning water, it's all at your fingertips. There is choice in every detail, as homeowners can even select the exact quantity of bubbles and the amount or temperature of filtered water via the dial, reducing waste and adding convenience.

A jet spray function makes light work of rinsing fruit, vegetables and cookware, so that everyday tasks are that bit easier. You can save 4 personal settings conveniently via the BLANCO app and it makes reordering replacement consumables easy. This drink system is a 'must have' for anyone wanting to future proof their kitchen.



Combining function with style, the ICONA-C features a sleek, curved C-shaped spout with a concealed pull-out spray, while the ICONA-L introduces a modern, minimalist L-shaped design with a pull-out, extendable tap head. Both designs make everyday tasks such as filling a jug, rinsing fruit and washing cookware faster, easier and more enjoyable.

---

Speak to your kitchen designer about including CHOICE in your BLANCO UNIT.

---

[BLANCO.CO.UK](https://www.blanco.co.uk)

ICONA-L





# *Perfect Pairings* Choosing your Kitchen Cabinet Handles

When choosing your kitchen handles, ensure they complement the design theme and enhance your kitchen's style. Our guide shows you how to achieve this.

## THE PERFECT COMPLEMENT

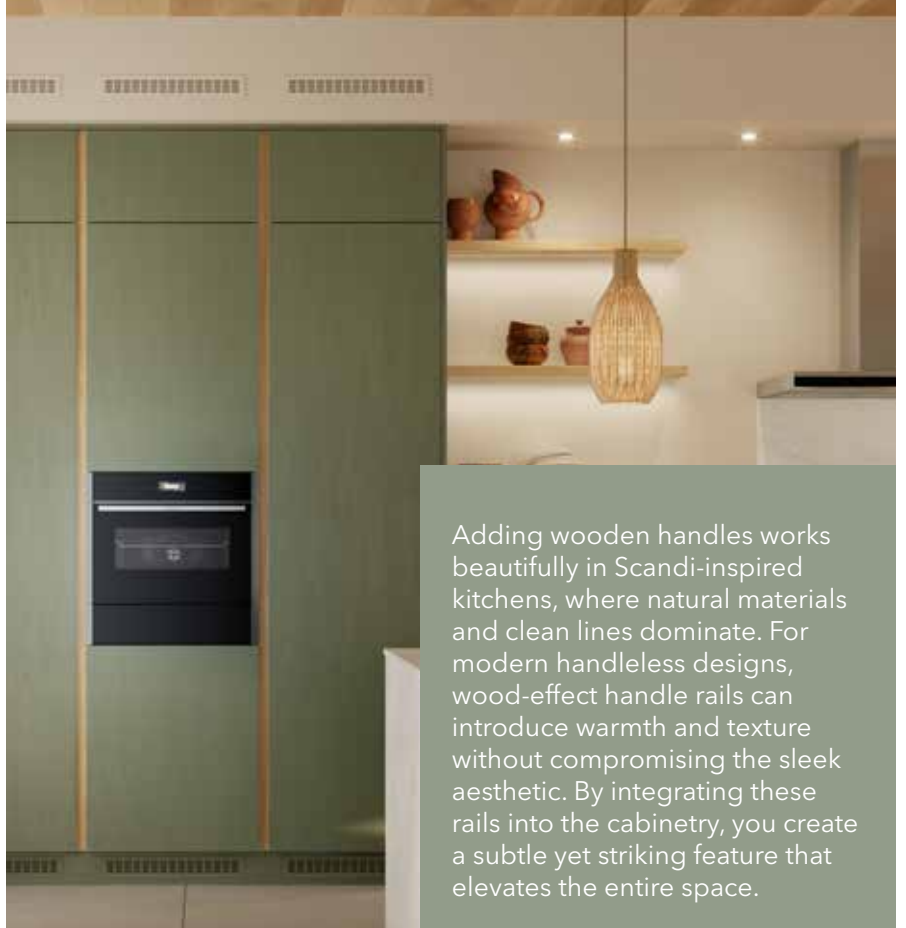
Handles may seem like a small detail, but they have the power to unify your kitchen design. Wood handles are an ideal choice for creating harmony with cabinetry and drawers, especially when they echo the tones and textures of your chosen materials. Matching wood handles to the finish of your cabinets ensures a seamless look that feels curated and intentional.



BLONDE OAK HANDLES WITH BLOOMSBURY PUMPKIN SPICE AND LIGNA BLONDE OAK ISLAND WORKTOP



PORTLAND OAK HANDLES (ABOVE) AND PORTLAND OAK HANDLE RAIL (RIGHT)



Adding wooden handles works beautifully in Scandi-inspired kitchens, where natural materials and clean lines dominate. For modern handleless designs, wood-effect handle rails can introduce warmth and texture without compromising the sleek aesthetic. By integrating these rails into the cabinetry, you create a subtle yet striking feature that elevates the entire space.

While wood handles bring cohesion and warmth, metallic accents can inject personality and sophistication. Choosing complementary handle families in finishes like brushed brass, matt black, or polished chrome allows you to create contrast against timber cabinetry or stone worktops. These accents can highlight design details, tie in with taps and appliances, and add a layer of luxury to the overall scheme.



CLIFTON ROSSO WITH BRIGHT NICKEL EFFECT FLUTED HANDLES



MADOC RECLAIMED OAK WITH INDUSTRIAL MATT BLACK HANDLES

For contemporary kitchens, metallic handles can become a focal point, balancing natural textures with modern elegance. By keeping finishes consistent across handles, rails, and accessories, you achieve a polished, harmonious look that feels both stylish and functional.



NEOLITH  
touch.feel.live

TAJ MAHAL / Silk finish

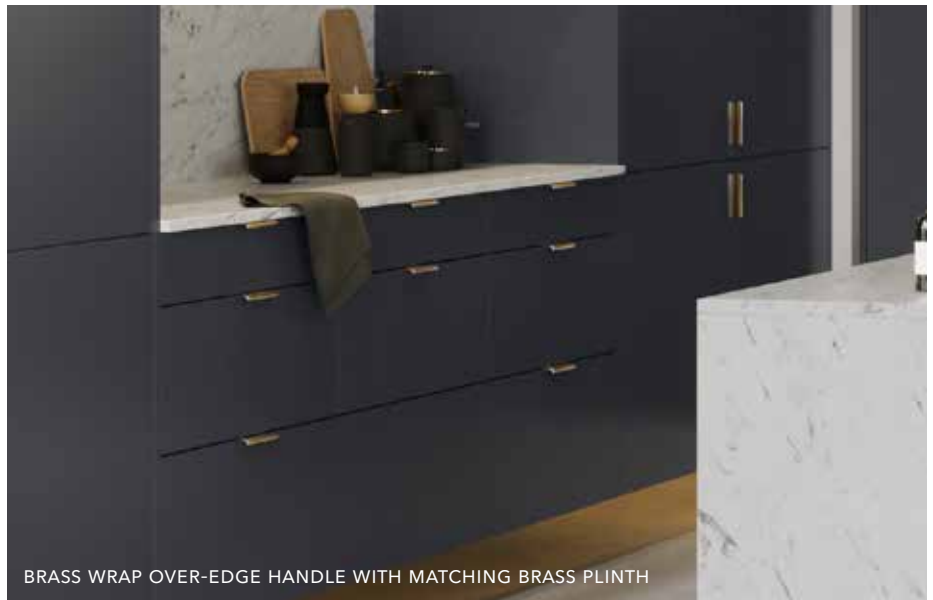
## TRUE INNOVATION BEGINS WITH SUSTAINABILITY

Neolith sintered stone surfaces are designed to stand up to everyday challenges with exceptional resistance to heat, scratches, stains, and UV radiation. Whether in kitchens, bathrooms, or outdoor spaces, they maintain their appearance and performance for decades with minimal upkeep.

NEOLITH.COM

For those who love a streamlined aesthetic, edge handles are the ultimate choice. Fitted discreetly to the top or side of cabinet doors, they create a clean, uninterrupted surface that enhances modern and minimalist designs. Edge handles are available in a variety of finishes – from matching wood tones for a subtle, integrated look to metallic accents for a touch of contrast.

For more inspirational tips, visit [masterclasskitchens.co.uk/inspiration](https://www.masterclasskitchens.co.uk/inspiration)



BRASS WRAP OVER-EDGE HANDLE WITH MATCHING BRASS PLINTH



PADSTOW HIGHLAND STONE WITH ANTIQUE BRONZE EFFECT CUP AND KNOB HANDLES



BRUSHED MATT BLACK DOUBLE T-PULL HANDLE



ROUND MATT BLACK KNURLED KNOB HANDLE



HAWKSMOOR NEW FOREST WITH PORTLAND OAK WINE DRAWERS

# *Gothic Grandeur in the* **Heart of the** **Home**

Set within an 18th-century country house, this dramatic kitchen designed by Kingswell Kitchens pairs deep New Forest Green cabinetry with traditional detailing and refined craftsmanship, creating a space that feels richly atmospheric, timeless in character and perfectly at home within its historic surroundings. Dean and Karly from Kingswell Kitchens collaborated closely with the homeowners to design a space that fully realised their style and wishlist.

**HAWKSMOOR NEW FOREST WITH PORTLAND OAK CABINERY**



**HAWKSMOOR NEW FOREST WITH PORTLAND OAK COUNTRY DRESSER**



# Q&A

*Karly Packham*  
KITCHEN DESIGNER,  
KINGSWELL KITCHENS

## WHAT WAS THE BRIEF FOR THIS KITCHEN?

The brief was to create a kitchen that felt entirely in keeping with the rest of the home, embracing a gothic aesthetic while delivering real visual impact when viewed from the adjoining dining room. It needed to feel dramatic and atmospheric, yet still function perfectly as a practical family kitchen.

## WHAT VISION DID THE HOMEOWNERS HAVE FOR THE SPACE, AND WHAT INSPIRED THE FINAL DESIGN?

The clients' home is a beautiful 18th-century country house, rich in character and history. Throughout the rest of the property, the interiors had been carefully styled to reflect the home's gothic roots, and it was important that the kitchen followed suit. This inspired the use of dark, moody tones such as New Forest Green, alongside traditional features including a Thomas Denby butler sink with brass fittings, a black range

cooker with brass handles, and a substantial mantle with corbels positioned above the cooker to anchor the space.

## WERE THERE ANY FEATURES OF THE ROOM THAT HELPED SHAPE THE DESIGN APPROACH?

Yes, the room has very high ceilings and an awkward shape, both of which needed careful consideration to ensure the space felt balanced and cohesive. The overall gothic aesthetic is what truly sets this kitchen apart, enhanced by the home's huge bay windows and impressive ceiling height, which add drama and a real sense of grandeur.

## CAN YOU TALK US THROUGH THE FINISHED KITCHEN DESIGN AND ITS KEY FEATURES?

The unusual layout of the kitchen made planning particularly important. Deciding where key elements such as the fridge, sink and preparation areas should sit took time, as everything needed



HAWKSMOOR NEW FOREST WITH FRENCH CORBELS



HAWKSMOOR NEW FOREST WITH REEDED GLASS CABINETS AND OPEN SHELVING IN PORTLAND OAK



to be positioned logically for the customer while working within the constraints of the room's shape. The kitchen features the Hawksmoor range in a striking combination of New Forest Green and Portland Oak. Brass handles add warmth and elegance, while reeded glass cabinets with internal lighting introduce texture and visual interest. Either side of the cooker sit two bi-fold worktop dresser units with integrated LED lighting, complemented by open shelving with further illumination. A Thomas Denby butler's sink with brass features sits against a sink wall cloaked in tongue and groove panelling, finished with torus skirting. Feature round posts on either side of the cooker reinforce the gothic influence and help frame the range beautifully.

**WERE THERE ANY SIGNATURE STORAGE FEATURES INCLUDED IN THE DESIGN? IF SO, WHAT WERE THEY?**

Yes, the kitchen includes wine drawers as well as two bi-fold dresser units, combining generous storage with everyday practicality. I love how seamlessly the kitchen blends into the style of the rest of the house. It feels as though it has always belonged there, rather than being a new addition. The customers absolutely love it.





**TELL US YOUR BEST ADVICE  
FOR HOMEOWNERS  
HOPING TO START THEIR  
RENOVATION JOURNEY?**

Visit a Masterclass showroom to explore the wide range of cabinets available, and take time to write a wishlist of everything you'd love to include. Talk openly with your designer and don't be afraid to keep refining your ideas until the design feels perfect for you.



# Retailer Spotlight: *Owen Williams Kitchens*

We sat down with Owen, the man behind the name, to uncover the story of how a passion for craftsmanship turned into one of the area's most trusted kitchen specialists. From humble beginnings as a hands-on joiner to running a thriving showroom, Owen's journey is one of vision, dedication and an unwavering commitment to quality. In this exclusive spotlight, he shares what inspired him to take the leap, why partnering with Masterclass Kitchens was a game-changer, and the features customers can't stop talking about.

KENSINGTON WILLOW AND HIGHLAND STONE PORTLAND OAK CABINetry



THE HATHAWAY IN PORTLAND OAK



## Q&A

*Owen Williams*  
OWNER,  
OWEN WILLIAMS KITCHENS

### CAN YOU TELL US A BIT ABOUT YOUR JOURNEY INTO KITCHENS?

I've been self-employed since 2004, working as a joiner with a strong focus on kitchen and bathroom installations alongside a wide variety of joinery and building projects. While I always enjoyed fitting kitchens, most of my early work involved lower-end, off-the-shelf options. In 2015, I opened my showroom to give homeowners access to better quality kitchens, expert advice, and designs that genuinely improve how they use their space. For customers, it means working with someone who understands kitchens inside and out, from design through to installation.

### HOW DID YOU COME ACROSS MASTERCLASS KITCHENS, AND WHY DID YOU FEEL THEY WERE THE RIGHT CHOICE FOR YOUR CUSTOMERS?

When I was planning the showroom, I spent months researching

manufacturers to make sure I could offer something truly worthwhile to my customers. Masterclass was recommended to me by other professionals in the industry, and once I explored the range and met the team, it quickly became clear they shared the same values I do. The quality, design flexibility, and attention to detail stood out straight away. Partnering with Masterclass allows us to offer customers kitchens that feel considered, well made, and tailored to their lifestyle, not just their room size.

### WHAT HAS WORKING WITH MASTERCLASS KITCHENS MEANT FOR YOUR CUSTOMERS OVER THE YEARS?

From a customer perspective, it's meant consistency, reliability, and choice. The support we receive behind the scenes ensures projects run smoothly, while the product range gives customers access to thoughtful design features that



DRESSER WITH BI-FOLD DOORS IN PORTLAND OAK



HATFIELD GRAPHITE



H-LINE SUTTON NEW FOREST



HATFIELD MOONLIGHT BLUE



KENSINGTON MOONLIGHT BLUE WITH PORTLAND OAK CRATE  
DRAWERS AND LARDER



H-LINE SUTTON HEATHER SLATE



### GLAMOROUS LIGHTING

Under cabinet lighting gives a beautiful ambience and makes every culinary moment shine.

make everyday life easier. Whether it's clever storage, beautifully finished interiors, or durable materials, customers benefit from kitchens that are designed to look good and work hard for years to come.

**ARE THERE ANY SIGNATURE COLLECTION FEATURES YOUR CUSTOMERS PARTICULARLY LOVE OR OFTEN CHOOSE?**

Yes, there are a few features that really resonate with customers. The Lansbury corner pantry has been a showroom favourite for years because it offers a timeless look with real character. The wood-effect drawer boxes are another popular choice, as they add a premium, furniture-style finish that customers immediately notice. The bi-fold dressers have also been incredibly well received, offering practical storage while creating a strong visual feature within the kitchen.

**DOES THE MASTERCLASS RANGE GIVE CUSTOMERS THE FLEXIBILITY THEY'RE LOOKING FOR IN THEIR KITCHEN DESIGN?**

Very much so. While no manufacturer can cater to absolutely every request, Masterclass comes extremely close. One of the biggest advantages for our customers is the ability to choose between handleless and handled kitchens



KENSINGTON HIGHLAND STONE WITH PORTLAND OAK OPEN CABINERY

from the same manufacturer. This means we can design both modern and more traditional kitchens without compromise, even within a compact showroom. Customers get genuine choice and confidence that their kitchen will reflect their personal style.

**DO YOU RECOMMEND MASTERCLASS KITCHENS?**

Absolutely, without hesitation. For all

the reasons I've mentioned above: exceptional people, outstanding products, and a partnership that truly adds value to our business and our customers' lives.



H-LINE LIGNA MAYFIELD OAK WITH SUTTON HIGHLAND STONE



# The Art of Neutral *A Recipe for Timeless Design*

Classic charm meets the modern warmth of a baby blue Lacanche cooker to add a splash of colour and personality to this beautiful space. Perfectly complemented by Portland Oak cabinetry

**HARDWICK HIGHLAND STONE WITH PORTLAND OAK DESIGNED BY KNARESBOROUGH KITCHENS**





**REACH YOUR POTENTIAL**  
A Country Dresser is a modest storage feature with stacks of potential. Shown here in Portland Oak, this is a chef's favourite.

**Miele**

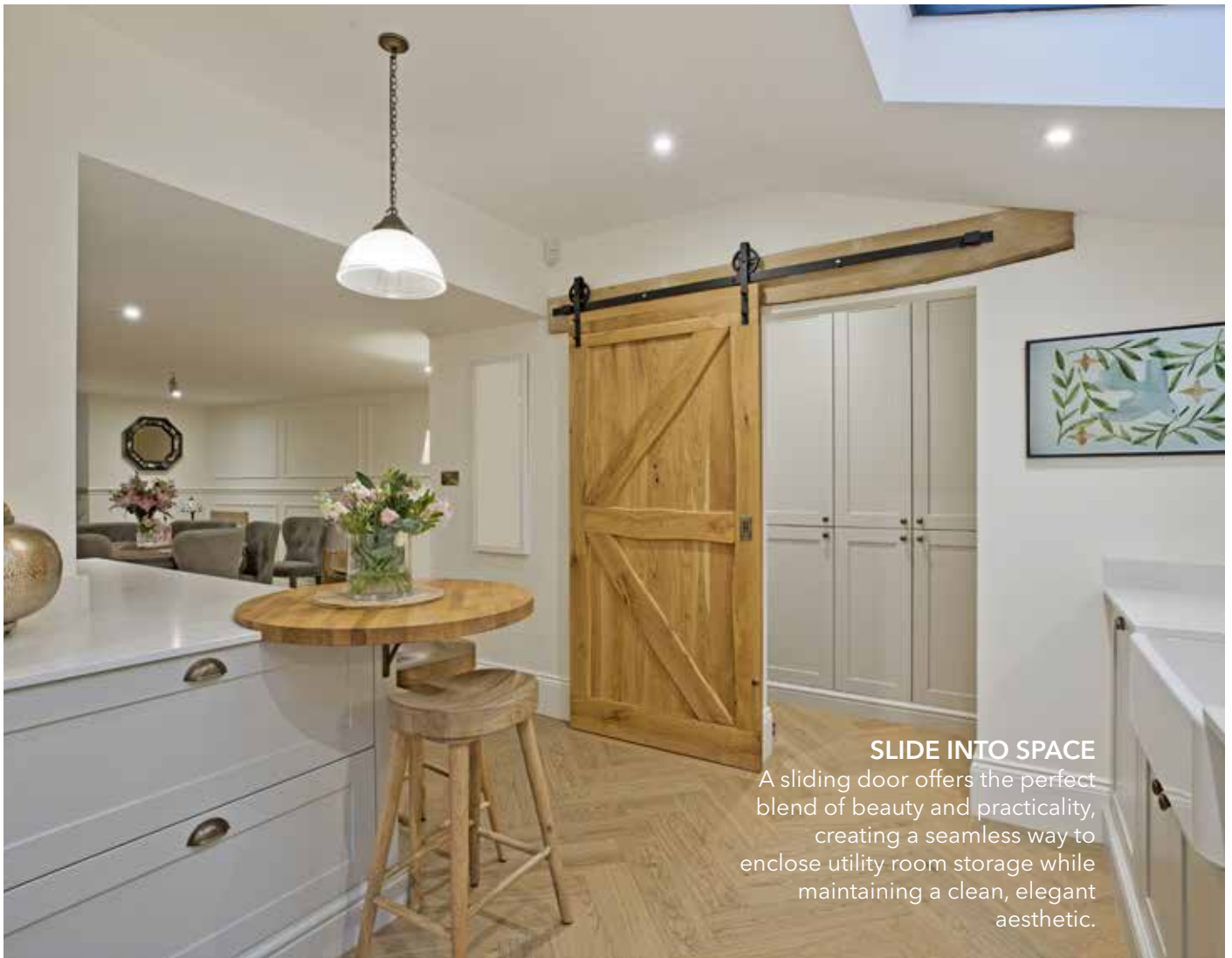
So well designed, you'll want to  
have them around forever.  
So well engineered, you will.

Once a Miele,  
**Always a Miele.**

## PRETTY BY DESIGN

At the heart of this space sits the stunning Delft Blue Lacanche range cooker a statement piece that brings a gentle, serene hue to the warm, neutral backdrop. Its timeless elegance pairs effortlessly with Hardwick Highland Stone, creating a harmonious blend of sophistication and charm.





### SLIDE INTO SPACE

A sliding door offers the perfect blend of beauty and practicality, creating a seamless way to enclose utility room storage while maintaining a clean, elegant aesthetic.



## STORAGE WITH STYLE

This encased dresser design makes a bold statement with its tall, elegant cabinetry and seamless finish. Crafted to create a sense of grandeur, the look is elevated by refined torus plinth detailing.





# *A Kitchen Bathed in Earthy Hues and Indoor Greenery*

HARDWICK OLIVE WITH LIGNA TUSCAN WALNUT AND MATCHING CABINETRY



**WINE BAR**

Thoughtfully designed, this nook creates an intimate bar area – a hidden gem made for relaxed evenings and special moments.



# Q&A

*Jo Hurley*  
 KITCHEN DESIGNER  
 EUPHORIA KITCHENS

Designed for modern family living and effortless entertaining, Jo from Euphoria Kitchens carefully designed this beautiful, well-considered kitchen. Showcasing how thoughtful layout, layered materials and intelligent storage transform a busy household space into a warm, inviting hub that works hard every day while reflecting the personality, lifestyle and long-term priorities of its owners.

**WHAT WAS THE BRIEF FOR THIS KITCHEN?**

The brief was to create a truly multifunctional kitchen that could keep pace with a busy household while remaining beautifully organised. Storage was key, with carefully considered accessories to ensure every essential had its place. The space needed to work effortlessly for everyday family life, while also being perfectly suited to hosting and entertaining on a regular basis.

**WHAT INSPIRED THE CUSTOMER'S DESIGN CHOICES?**

The home already benefited from an extended living area, complete with wide bi-folding doors opening out onto a generous garden. From my very first visit, it was clear that warm, earthy tones would form the foundation of the design. The clients also had a real love of houseplants, so bringing the outside in became a central theme throughout the space.

## MASTERFUL COOKING

Ligna Tuscan Walnut adds warmth and depth, beautifully breaking up the Hardwick Olive cabinetry to create a rich, inviting culinary space.



## WERE THERE EXISTING FEATURES WITHIN THE KITCHEN THAT YOU HAD TO WORK AROUND?

Not particularly. As part of the wider renovation, a small side extension was added to accommodate a separate utility, cloakroom and lobby, which is now showcased as the wine bar area. As the building work was managed by the client, we were fortunate to have a completely blank canvas when it came to designing the kitchen itself.

## WERE THERE ANY CHALLENGES YOU HAD TO OVERCOME DURING THE DESIGN AND INSTALLATION PROCESS?

The main challenge was the positioning of the roof light, which wasn't central to the room. It was essential that the island was planned with precision so that a feature pendant could be suspended from the centre of the roof light while also aligning perfectly with the circular breakfast bar at the end of the island.

## TELL US ABOUT THE KITCHEN DESIGN. WHAT DOES IT INCLUDE?

This striking kitchen combines Hardwick Olive cabinetry with Ligna Tuscan Walnut, creating depth and warmth throughout the space. The internal cabinetry is finished in Tuscan Walnut, while the worktops are Calacatta Magnifico by Cimstone. An Antique Bronze Mirror effect glass splashback sits behind the gas hob, with a Metalix Bronze splashback from Masterclass positioned behind the TV. All metalwork throughout the kitchen is finished in Antique Brass, tying the scheme together beautifully.

## WERE THERE ANY SIGNATURE STORAGE FEATURES INCLUDED IN THE DESIGN? IF SO, WHAT WERE THEY?

We really did include just about everything. The kitchen features a Lansbury corner with door-mounted spice racks, a 40cm SpaceTower Larder, and a full-depth Country Dresser housing the coffee station and air fryer, complete with a 1,200 bi-fold base below. There's also an 84L Velabin, a bronze display larder cabinet with mirrored back, two Tuscan Walnut cutlery inserts and a 30cm Tuscan Walnut base pull-out.



## CLEVER CORNER

This built-in media area sits within Tuscan Walnut cabinetry, complemented by a tall smoked glass larder designed to showcase beautiful trinkets.

**IS THERE A PARTICULAR ELEMENT YOU ARE MOST PLEASED WITH AND WHY?**

One of my favourite elements is the circular end to the island, which allows family and guests to sit comfortably in the kitchen without getting in the way of the cook. We introduced Walnut Flutto Mini Ridge panels to form a curved leg, complete with integrated downlights that highlight the richness and natural warmth of the walnut.

**AS FAR AS YOU KNOW, DOES THE NEW KITCHEN WORK FOR THE OWNERS?**

All of the essentials are neatly tucked away while remaining easily accessible, freeing up worktop space for the client to display plants, candles and a crystal collection that truly reflects their personal style. We received wonderful feedback from the client, who was more than happy to welcome me back to photograph the finished kitchen and show off the completed project.



**IMPECCABLE DESIGN**

Thoughtfully placed under-cabinet lighting brightens the workspace and subtly elevates the kitchen's style.



**TELL US YOUR BEST ADVICE FOR HOMEOWNERS HOPING TO START THEIR RENOVATION JOURNEY?**

This client had waited a long time for their kitchen, which gave them the opportunity to fully understand their priorities. My advice would be not to rush the design process. Take time to work closely with your kitchen designer, who should offer guidance while really listening to your needs. Having a clear idea of your budget from the outset is also incredibly helpful, allowing your kitchen supplier to steer you towards the right products and decide together where it's worth investing for the greatest impact.

ADVERTORIAL

# *Explore the Stunning* Appliance Collection from Bertazzoni



# *Family. Food. Engineering. Traditions at the heart of our character and our company*

Bertazzoni is a household name within the UK Range Cooker market. However, in more recent years, they have been expanding their product offering to the full kitchen suite. For any designer or client wishing to make their kitchen design stand out from the crowd and create a WOW through appliances, Bertazzoni's new built-in oven is a must see. Brand new ovens with a unique style, the Bertazzoni has developed exclusive mirror-finish surfaces. These highly reflective finishes create a timeless look, with a sophisticated play of reflections in shades of Gold, Bronze and Obsidian.

Style and substance – no compromising needed when selecting Bertazzoni appliances for your kitchen. High build quality and



stunning design across a full suite of appliances. Well designed and powerful gas hobs still make an imprint in kitchen designs, despite the continuous growth of induction. Bertazzoni offer solutions as well as style, the unique and patented Air-Tec Cooker allows for the statement piece of a range cooker within an island kitchen setting without needing a separate extractor. The only freestanding 3-in-1 appliance available for this solution. Bertazzoni prides itself on co-ordinated design, where every Bertazzoni appliance is designed to work in harmony with the others in its series.



**TO COOK BEAUTIFULLY**

# *Timeless Kitchens*

## Luxury in Your Home

Shaker kitchens are here to stay. The timeless kitchen design is loved by many and still dominates kitchen design today.



OSLO HIGHLAND STONE WITH PORTLAND OAK HANDLES, SHELVING AND ACOUSTIC WALL PANNELLING

We often associate Shaker kitchens with traditional kitchen settings, but Shakers have had a makeover. The skinny Shaker design is a modern way to incorporate the timeless kitchen look in your space while retaining a modern touch in the home. Create a functional and aesthetically pleasing kitchen by incorporating wood features into your design. The addition of Blonde Oak, Portland Oak, Tuscan Walnut or Espresso cabinetry adds warmth to the timeless design.



COMBINATION UTENSIL DRAWER IN TUSCAN WALNUT

Wood finishes have always been the hallmark of bespoke kitchen design, and now you can achieve this style at a much more affordable cost. Prioritise an efficient layout by making the most of available space. Open storage solutions, such as Crate Drawers or larders now offer dedicated spaces where you can have your favourite items at your fingertips. They are fabulous ways to add a pinch of personality to your space.



BLONDE OAK DRAWERS WITH CUTLERY INSERT



CRATE DRAWERS IN ESPRESSO



ESPRESSO INTERNAL DRAWERS



SPACETOWER IN BLONDE OAK

*“Clever storage features will transform your space and improve your wellbeing”*

If you're looking for a classic Shaker kitchen design with timeless storage features, with easy access to your pantry items, why not opt for a SpaceTower? Clever storage features will transform your space and improve your wellbeing. Choosing from four beautiful finishes – Blonde Oak, Portland Oak, Tuscan Walnut or Espresso – allows you to create a harmonious design with the rest of your kitchen.



COUNTRY DRESSER IN PORTLAND OAK



MAGNASPACE IN ESPRESSO



MAGNASPACE IN PORTLAND OAK

Our largest MagnaSpace pull-out can hold a whole weekly shop and is ideal for utilising tight kitchen space. The pull-out helps you avoid clashes with other doors. Similarly, our smallest model, featured here in a cosy minimalist kitchen, is perfect for hiding spices.



*“Prioritise an efficient layout by making the most of available space. Open storage solutions, such as Crate Drawers or larders now offer dedicated spaces where you can have your favourite items at your fingertips. They are fabulous ways to add a pinch of personality to your space.”*



HARDWICK ONYX WITH TUSCAN WALNUT CABINETRY



HARDWICK ONYX REEDED GLASS DOORS

*“Create a functional and aesthetically pleasing kitchen by incorporating wood features into your design. The addition of Blonde Oak, Portland Oak, Tuscan Walnut or Espresso cabinetry adds warmth to the timeless design.”*



OSLO HIGHLAND STONE WITH ESPRESSO CABINETRY, HANDLES, SHELVING AND ACOUSTIC WALL PANELLING



BAR DRESSER IN BLONDE OAK WITH MATCHING HANDLES AND CROSS WINE RACK



HATFIELD WILLOW WITH TUSCAN WALNUT SHELVING

You can include several features that instantly elevate the aesthetic to achieve a traditional design. A kitchen mantle is a surefire way to add a classic touch. Integrating glass or open cabinetry allows you to display your favourite adornments proudly. Speaking to your kitchen designer will allow you to understand all the possibilities of a classic kitchen design.



FRENCH MANTLE IN ROSSO



HATFIELD WILLOW WITH TUSCAN WALNUT CROSS WINE RACK



GLASS CABINETS IN KENSINGTON PINE GREEN

## *Become a Masterclass Kitchens Insider*

Get inside knowledge from our experts and be the first to receive exclusive guides, product launch information and more!





# SPACE TOWER

Sleek Aesthetics.  
Towering Performance.

When the most inspirational design meets ultimate functionality, something extraordinary happens. LEGRABOX brings its signature sleek aesthetic and feather-light motion to SPACE TOWER, transforming larder storage into a premium experience. For retailers ready to offer something truly special, this is drawer box excellence, scaled up and built in.



SCAN  
HERE

Discover  
SPACETOWER

[www.blum.com/SPACETOWER](http://www.blum.com/SPACETOWER)

# FOOD & DRINK

Are you expecting guests this weekend and need help deciding what to cook? We have a fantastic yet easy-to-make menu that will impress your guests. What more could you want?

## Beetroot and Potato Salad

SERVES 4

### Ingredients

- 900g potatoes cut into bite-sized chunks
- 2 tbsp olive oil
- 4 medium beetroots
- 1 shallot
- 40g mayonnaise
- 1 tsp apple cider vinegar
- 1 tsp Dijon mustard
- Dill to garnish

### Method

1. Place the potatoes into a large saucepan. Cover with salted water and cook on medium until just tender – around 15/20 minutes. Drain and sprinkle 1 tbsp of olive oil and toss to cover. Set aside.
2. Cook the beetroots over a medium heat for 45-60 minutes, or until fork tender. Drain and let them cool slightly. Peel and cut into medium to thick chunks. While still warm, sprinkle with 1 tbsp of olive oil and toss to cover. Set aside.
3. Mix the potatoes, beetroots and shallot in a large bowl.
4. In a small bowl, whisk the mayonnaise, vinegar, mustard and dill. Toss with the vegetables. Taste and adjust salt if necessary. Serve and enjoy.

# Gnocchi with *Mushroom and Blue Cheese*

SERVES 4

## Ingredients

- 2 x 400g packs of fresh gnocchi
- 1 tbsp of olive oil
- Knob of butter
- 1 large onion, roughly chopped
- 500g Portobello mushrooms, sliced
- 2 large garlic cloves, chopped
- 150g pack of creamy blue cheese
- Small pack of parsley, chopped

## Method

1. Bring a large pan of water to the boil and cook the gnocchi according to the pack instructions. They are ready when they float to the top. Drain and set aside.
2. In the meantime, heat the oil and butter in a large frying pan. Add the chopped onion and mushrooms, cook for 1 minute over a high heat, then turn down to medium and put the lid on. Cook for 5 minutes, stirring a few times.
3. Remove the lid and add the garlic, cook for 1-2 minutes, then stir the gnocchi back into the pan. Scatter over the chunks of blue cheese and the parsley.



# Sweet Potato *Brownies*

Three square sweet potato brownies are arranged on a piece of crumpled white paper. The brownies have a dark, moist-looking interior and a slightly lighter, textured top surface. The background is a dark, textured surface, possibly a countertop or table.

MAKES 8

## Ingredients

- 450g sweet potato
- 75g raw almonds
- 60g oats
- 10 tbsp cocoa or cacao powder
- 6 tbsp coconut or cane sugar

## Method

1. Peel the sweet potatoes and chop them. Steam or boil until soft (roughly 25 minutes)
2. Preheat the oven to 180°C
3. Place the almonds in a food processor and blend until they have made a flour
4. Add the oats and blend again
5. Once the sweet potatoes are cold, add them to the food processor along with the rest of the ingredients and blend one more time
6. Place the batter into a baking dish and bake for 25-30 minutes.
7. Cut the brownies into squares once they have cooled slightly, serve and enjoy!



# Glamorous *Home Bar Ideas*

Our favourite home bar ideas show you how to host your friends with neat storage solutions.

WINE DRAWERS IN TUSCAN WALNUT



BAR DRESSER IN TUSCAN WALNUT



DISPLAY LARDER WITH SMOKED GLASS DOORS



SUTTON HEATHER SLATE



THE CONNERY IN PORTLAND OAK

If you're looking to add a touch of luxury and glamour to your home, the Connery cocktail cabinet is a beautiful choice. It's the perfect addition to any kitchen design, especially if you often entertain guests and family. This iconic piece of furniture is guaranteed to impress and elevate the overall look of your living space.

*“Serve your drinks in style from a dedicated drinks station. Find your favourite design and let the celebrations commence!”*



Give your kitchen the ability to work in several ways. By day, meal preparation; by night, a beautiful bar! Bi-folding doors and wine drawers allow you to showcase your favourite bottles, glasses and ornaments. This means the bar is always going to be open!

BAR DRESSER WITH BI-FOLD DOORS IN PORTLAND OAK



WINE DRAWERS IN TUSCAN WALNUT

Our Bar Dresser covers the whole cocktail-making process. It houses a hanging wine glass rack, prep workspace, and tiered shelving for your favourite spirits. The Bar Dresser features bi-fold doors and internal lighting as standard and is available in two cabinet colour options.

Classy and intricate Wine Drawers complement a classic kitchen design and look great in a contemporary space – the ideal home for your prized wine collection. Choose from five width options and two cabinet colour choices.



THE CONNERY IN PORTLAND OAK



TUSCAN WALNUT BAR DRESSER



BOX WINE RACK IN PORTLAND OAK

Conceal your bar in a kitchen cupboard and wow your friends by unveiling your pride and joy. Serve your drinks in style from a dedicated drinks station. Find your favourite design and let the celebrations commence!



H-LINE MADOC RECLAIMED OAK WITH METALIX BRASS AND AMALFI ONYX

# Beautiful Real Kitchens

Our stunning real kitchens speak for themselves. They are designed and installed by our network of dedicated and highly experienced partners. Here are just a few...

Visit [masterclasskitchens.co.uk/real-kitchens](https://www.masterclasskitchens.co.uk/real-kitchens) to see more.

For even more design inspiration order a copy of our brochures by scanning the QR code below.



**H-Line Amalfi Sunset, Onyx with Onyx Handle Rails and Acoustic Wall Panelling**

Designed and installed by Neat Kitchens



**Hardwick Highland Stone with Portland Oak Cabinetry**

Designed and installed by Ratford Bridge Kitchens



**H-Line Amalfi Rosso and Dusty Pink with Ligna Tuscan Walnut**

Designed and installed by Masterclass Kitchens



**Hawksmoor New Forest with French Corbels**  
Designed and installed by Howard Oliver Design



**H-Line Milano Rustic Leather with Portland Oak Acoustic Wall Panelling**  
Designed and installed by Sigma 3 Kitchens



**Hawksmoor New Forest with Highland Stone and Tuscan Walnut cabinetry**  
Designed and installed by Britannia Design



**Hawksmoor Windsor Blue and Light Grey with Portland Oak Cabinetry**

Designed and installed by HKS Interiors



**Clifton Highland Stone with Tuscan Walnut Dresser**

Designed and installed by Moulton Kitchens



**Ashbourne Beach House**

Designed and installed by George Roberston



**Hawksmoor Oxford Blue**

Designed and installed by The KBB Centre



**Sutton Autumn Blush and New Forest**

Designed and installed by Home Sweet Home



**Hatfield Highland Stone Portland Oak Bar Dresser**

Designed and installed by Owen Williams Kitchens



**H-Line Amalfi Windsor Blue with Scots Grey and Portland Oak Drawers, Handle Rails and Cabinetry**

Designed and installed by Stratton Studios



**H-Line Sutton New Forest**  
Designed and installed by Acaelia Home Design



**H-Line Oxwich Candy Floss with Ligna Tuscan Walnut**  
Designed and installed by Kingswell Kitchens



**Sutton Willow with Portland Oak Dresser**  
Designed and installed by Euphoria Kitchens



**Ashbourne Highland Stone with Portland Oak Cabinetry**  
Designed and installed by Sigma 3 Kitchens

*Are you ready for more?*

To see even more design ideas order a copy of our brochures by scanning the QR code.



# Buying Your Dream Masterclass Kitchen



1

## Can I Buy Directly From Masterclass Kitchens?

We manufacture our kitchen furniture and only supply to a network of approved and appointed kitchen specialists. They will be able to show you displays, samples and colour swatches of our products and have the knowledge and skills to design and install a kitchen to suit your budget.

2

## Where is My Nearest Masterclass Kitchens Retailer?

The first step of your journey to purchasing your Masterclass kitchen is to visit one of our approved Platinum Partner kitchen specialists. With new retailers opening across the U.K., your Masterclass retailer should never be too far away. You can find their details at: [masterclasskitchens.co.uk/retailers](http://masterclasskitchens.co.uk/retailers)

3

## Where Can I See Masterclass Kitchens Displays?

Your local Masterclass Kitchens retailer will have a selection of inspirational kitchen displays, doors and handles for you to view. Visit your nearest retailer to see the breadth of possibilities for yourself.

4

## What is The Quality of Masterclass Kitchens?

We have been manufacturing kitchens since 1975, and quality has always been tremendously important to our business. We believe that the best kitchens are rigidly built and made in our factory by skilled craftsmen using the latest technology – not made up at your home. Your nearest retailer can advise you on any kitchen queries you may have.

5

## How Can I Contact Masterclass Kitchens?

We always advise contacting your chosen or nearest Masterclass Kitchens retailer if you have any questions or are looking for advice on your new kitchen purchase. They have the knowledge and skills to ensure you get the best from your Masterclass Kitchens experience. Should you want to contact us directly, please email: [hello@masterclasskitchens.co.uk](mailto:hello@masterclasskitchens.co.uk)

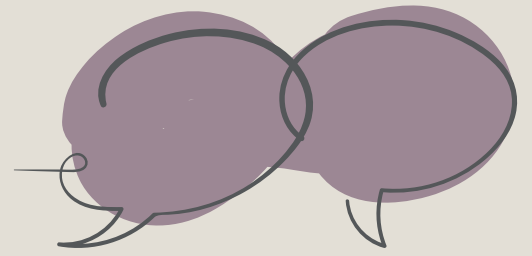
6

## What is the Standard Kitchen Warranty?

Your Masterclass kitchen comes with a 10-year warranty on cabinetry, a lifetime guarantee on all moving parts and a 3-year warranty on frontages and decor panels. Your nearest retailer will be able to advise you with any queries.



# Find Your Nearest Masterclass Kitchens Retailer



## Get a 3D Kitchen Design and Quote

Your Masterclass retailer will provide a quote based on your style, budget, and lifestyle requirements and create your dream kitchen design.

## See Inspirational Kitchen Displays

Our retailers will have a selection of Masterclass kitchen displays for you to touch, feel and experience. They will also have a large range of colour samples for you to mix and match.

## Get Expert Advice from an Expert Studio

All our retailers are experts in their field, and can give you invaluable advice on your project – no matter where you are in your journey.

## Masterclass Kitchens **Platinum Partner**



Your Platinum Partner studio will showcase the very best Masterclass Kitchen displays.

Scan the QR code to find your nearest retailer.



# Pets in Kitchens

53% of UK adults own a pet,\* and 94% of pet owners say that owning a pet makes them happy.\* So, thinking of your furry friend's requirements during the kitchen buying process is essential for both your happiness and theirs! We've included some of our favourite pictures of pets in kitchens.

\*according to PDSA animal wellbeing report for 2023



H-LINE AMALFI ONYX AND SUNSET WITH ONYX HANDLE RAILS



HARDWICK CANDY FLOSS



OXWICH NEW FOREST



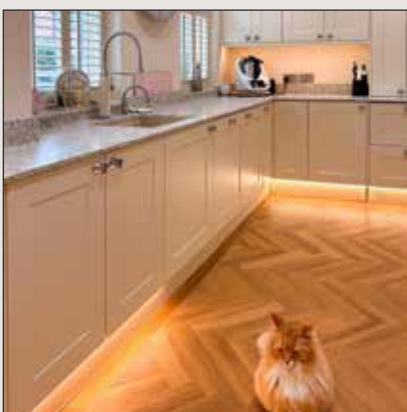
BLOOMSBURY OLIVE



BLOOMSBURY CANDY FLOSS



HATFIELD HIGHLAND STONE AND PINE GREEN



MARLBOROUGH HIGHLAND STONE



ASHBOURNE OLIVE AND FARRINGTON GREY



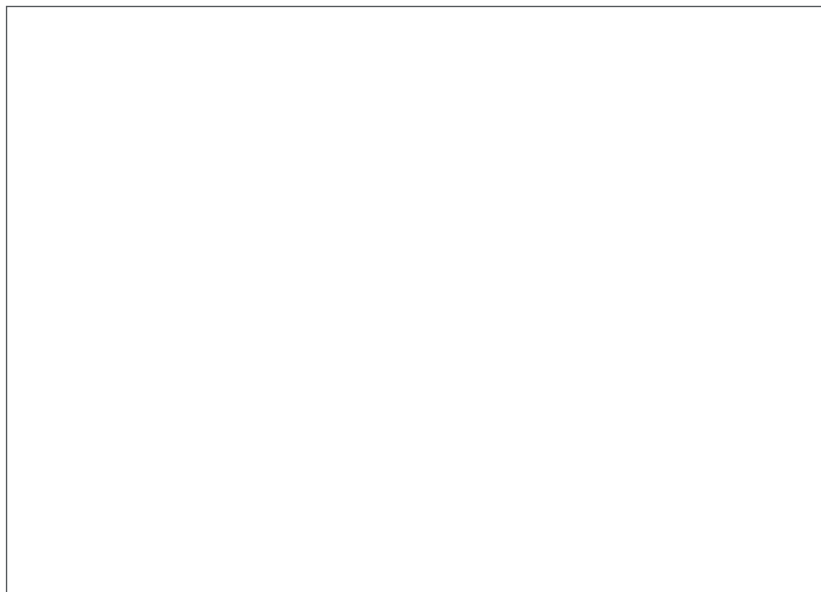
ASHBOURNE GRAPHITE WITH TUSCAN WALNUT BAR DRESSER



MASTERCLASS®  
— KITCHENS —



Say hello to your local *Masterclass Kitchens* partner



Est. 1975. Made in the U.K.

Order your copy of our latest brochure at [masterclasskitchens.co.uk](https://www.masterclasskitchens.co.uk)